

RESEARCH CENTRE FOR HEALTH

Crucible 2023



Melanie Dembinsky

Email: Melanie.Dembinsky@gcu.ac.uk

Research Online: <https://researchonline.gcu.ac.uk/en/persons/melanie-dembinsky>

I'm a trained social and medical anthropologist, receiving my PhD from the University of Kent, Canterbury. My PhD thesis is on lived breast cancer experiences of Yamaji, an Aboriginal group, women in Western Australia. I have a keen interest in health research with a specific focus on marginalised and vulnerable groups, both in the UK and overseas. I have worked on several very different projects, in different cities across the UK, since receiving my PhD. I came to Scotland in 2018 to start work on the TOPSY study, which is the longest project I have worked on so far. In addition to research, I have lectured in the Undergraduate programme in anthropology at the University of Kent, Canterbury, as well as the Master's of Research at the University of Stirling. I'm currently supervising 1 Masters in Public Health student at GCU. As part of my work experience, I have presented at national and international conferences, published in peer-reviewed journals and worked with PPIE representatives. My future aim is to lead a project that allows me to focus on my research interests and passions.



Diane Dickson

Email: Diane.Dickson@gcu.ac.uk

Research Online: <https://researchonline.gcu.ac.uk/en/persons/diane-dickson>

Diane joined GCU in 2012 as Lecturer in Diagnostic Imaging from an advanced practitioner sonographer role within the NHS. She was promoted to Senior Lecturer in 2018 and appointed Head of Department in 2021. Diane completed her PhD in 2020 and is an active member of the Musculoskeletal Health research group with interest in the role of ultrasound imaging as an enabling tool in the management of long term conditions. Current doctoral supervision includes projects on measurements of inflammatory foot disease in rheumatoid arthritis.

Diane is responsible for the strategic leadership of activities across the Department of Podiatry and Radiography and the wider School of Health and Life Sciences as member of Senior Management Group. Diane is an elected member of Senate.

Diane leads the education and training for the National Abdominal Aortic Aneurysm screening course and introduced the department's first-ever transnational education programme in the United Arab Emirates. She acts as an external accreditor for the Consortium for the Accreditation of Sonographic Education (CASE) and is a member of the National Abdominal Aortic Aneurysm screening lead screener and workforce group. She is a member of the AHP academic heads group and represents AHP academics within the Scottish Government AHP Public Health implementation plan National Oversight Group.



Linda Fenocchi

Email: Linda.Fenocchi@gcu.ac.uk

Research Online: <https://researchonline.gcu.ac.uk/en/persons/linda-fenocchi>

Dr Linda Fenocchi is based in the Yunus Centre for Social Business and Health and works with colleagues in the School of Health and Social Sciences and other departments across the University. Linda is a health economist and her research focuses on economic evaluation methodology, with application to clinical trials and to complex interventions influencing public health, patient-reported outcome measures for economic evaluation, and health service and community support service intersections. Currently Lecturer of Health Economics for the Masters Public Health programme Linda is exploring pedagogy for teaching health economics alongside a programme of study for professional recognition of Academic Practice.

Linda previously worked in central government policy roles for 16 years as a policy manager, including as a private secretary to successive Health Ministers. This experience informs Linda's approach to research and teaching, where she seeks to highlight the practical application and impact of research on real-world decision-making.

Linda is the founding Chair of the Scottish Health Economics Early Career Network, a member of the UK Health Economic Study Group (HESG) Early Career Researcher subcommittee, and an Auran (2022 programme).



Kirsteen Goodman

Email: Kirsteen.Goodman@gcu.ac.uk

Research Online: <https://researchonline.gcu.ac.uk/en/persons/kirsteen-goodman>

I have worked in the NMAHP Research unit at Glasgow Caledonian University since 2007 as a Senior Trial Manager/Researcher. I have degree in Pharmacology (Glasgow University) and a PhD in pharmaceuticals and novel imaging techniques (University of Strathclyde). I have over 15 years' experience in managing both drug and non-drug trials in a breadth of disciplines including rheumatology, cardiology, Multiple Sclerosis, Parkinson's disease and in women's health. I am currently involved in a portfolio of trials including being Chief Investigator of a pilot study assessing the feasibility of abdominal massage for the treatment of constipation in people with Learning disabilities. My trial operation expertise has been enhanced by sitting on one of the West of Scotland research ethics Committees and being an executive member of the UK Trial Managers Network. Patient and Public Involvement (PPI) has been at the forefront of my clinical trials work since 2007 and in 2018, I set up NMAHP's PPI group. I am currently the PPI lead at GCU. I am also a keen Trial methodologist and collaborate in many projects to increase evidence on recruitment and retention best practice in health research. I am currently leading on a project to determine the effect of people's preference and mode of data collection on trial retention.

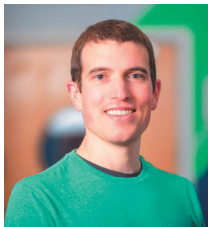


Emma Green

Email: Emma.Green@gcu.ac.uk

Research Online: <https://researchonline.gcu.ac.uk/en/persons/emma-green>

Emma Green is an experienced occupational therapist, educator and early career researcher. She qualified as an occupational therapist in 2002 and worked in a range of practice, research and managerial roles. She achieved her PhD in 2014 and has been working as a lecturer in occupational therapy at GCU since 2015. Emma has a strong track record in learning and teaching having become the learning and teaching advisor for the Department of Occupational Therapy, Human Nutrition and Dietetics in 2019. She has won GCU students teaching awards in 2017 and 2021 for “fantastic feedback” and won the inaugural GCU teaching impact award for “inclusive practice” in 2023. Building on this strong learning and teaching profile, Emma has dedicated her early career research activity to educational research. Emma has been a lead for a successful international collaboration with University of Sydney and Curtin University focused on designing, implementing and evaluating the implementation of simulation. This has led to dissemination activity at local, national, and international conferences. Emma has recently been commissioned as the lead editor for a book on practice education for allied health professionals. Emma has also successfully secured a GCU Strategy for Learning grant in 2022–23 for the innovative project “snack-size selfcare” which is an education research project focused on implementing selfcare resources within the curriculum to support student wellbeing.



Timothy Humpton

Email: Timothy.Humpton@gcu.ac.uk

Research Online: <https://researchonline.gcu.ac.uk/en/persons/tim-humpton>

Tim obtained Bachelor of Science degrees in Biology and Chemical-Biological Engineering from the Massachusetts Institute of Technology in 2010. During this time, his interest in cancer biology was cemented by formative undergraduate research. Tim obtained his PhD in Biochemistry from the University of Cambridge in 2014 as a Gates Scholar. His dissertation focused on elucidating the role of reactive oxygen species in promoting pancreatic cancer. As a post-doc at the CRUK Beatson Institute (2014–2021), Tim focused on the biology of p53, a potent tumour suppressor. Here, Tim uncovered protective functions of p53 in the liver and helped to develop new tools to visualise p53 activity.

At GCU, Tim is excited by the chance to combine an enthusiasm for teaching with pursuit of world-class research. He is particularly interested in uncovering novel protective functions for p53 and other cancer-associated genes during the development of ‘Western’ diet-induced liver disease. Using tools and techniques established within cancer biology, Tim hopes to uncover insights into liver disease that could lead to new preventative treatments and biomarkers to benefit patients. In support of his research, Tim has been awarded funding totalling more than £1 million from the MRC, Academy of Medical Sciences, and Tenovus Scotland.



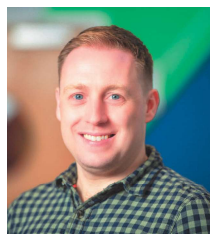
Karen Maxwell

Email: Karen.Maxwell@gcu.ac.uk

Research Online: <https://researchonline.gcu.ac.uk/en/persons/karen-maxwell>

I am a qualitative public health researcher with an interest in reducing social inequalities. I want my research to have real-world impact and to lead to real change for good in the world. My research interests centre around social inequalities in health, with previous research having focused on parenting and poverty, sexual health, and abortion access and stigma. I completed my PhD in 2018 looking at the impact of socioeconomic deprivation on men's fatherhood. I am currently working in the Substance Use Research Group on a project about public attitudes towards alcohol-related harms and the societal impact of extended nightlife opening hours. Prior to joining GCU, I worked for the MRC Social and Public Health Sciences Unit (SPHSU) for ten years on a range of projects related to public health, most recently as part of the team conducting the 4th National Survey of Sexual Attitudes and Lifestyles (NATSAL) in the UK.

I am co-chair of the SHLS Early Career Researcher Network, as I believe that developing strong networks and building career development opportunities for ECRs is crucial in allowing ECRs to reach their potential.



Bryan McCann

Email: Bryan.McCann@gcu.ac.uk

Research Online: <https://researchonline.gcu.ac.uk/en/persons/bryan-mccann>

As a senior lecturer in psychology within Glasgow Caledonian University (GCU)'s Department of Psychology, I am a BPS Chartered and HCPC Registered Sport and Exercise Psychologist with over 13 years' experience working in higher education. As an early career researcher my research interests focus on the interaction between adolescent physical activity and mental health, and I am interested in creative qualitative methods as a way of engaging hard to/hardly reached populations. I am currently Principal Investigator (PI) for a Knowledge Transfer Partnership (KTP) between GCU and Sport Aberdeen which focusses on embedding sport and exercise psychology knowledge within the Active Schools programme to enhance adolescent physical activity and mental health. I am also PI on a knowledge exchange and academic partnership between the Department of Psychology and the Scottish Association for Mental Health (SAMH) supporting SAMH to redesign and upscale their psychological wellbeing provision to the public to address the ongoing mental health pandemic. I am director of studies for a PhD focussing on the role of physical activity for the mental health of care experienced children and young people. I am passionate about knowledge exchange as a vehicle for generating impactful and meaningful research.



Boatemaa Ofori-Frimpong

Email: Boatemaa.OforiFrimpong@gcu.ac.uk

Research Online: <https://researchonline.gcu.ac.uk/en/persons/boatemaa-ofori-frimpong>

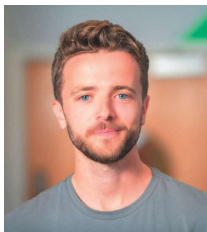
In Ghana, Boatemaa completed BSc (Hons) Medical Laboratory Technology in 2007 and worked as an intern Biomedical Scientist at Komfo Anokye Teaching Hospital (2007-2008) assisting in the diagnosis of health conditions and interested in understanding disease molecular mechanisms. Boatemaa therefore pursued higher education in MSc Biomolecular and Biomedical Science at Glasgow Caledonian University (GCU) from 2008 until 2009.

Boatemaa was awarded a GCU PhD studentship & Scottish Overseas Student Association (SORSA) Scholarship (2009-2012) within the area of cell and molecular biology to investigate connexin and pannexin cellular communication in obesity in the Martin lab. In addition, Boatemaa worked on novel peptides targeting connexin function in the Martin lab in collaboration with Zealand Pharma, Denmark (2012-2013).

As a Post-doc (2014-2016), in GCU's Vision Science Department Boatemaa investigated Narrow Spectrum Kinase inhibitors in Dry Eye Disease within the Hagan lab in collaboration with Topivert Pharma, London.

Returning from a career break in 2019, Boatemaa worked as a Post-doc with Dr Patricia Martin (GCU) and Prof Gail McConell (University of Strathclyde) to investigate Diabetic skin whole mount Tissue image analysis.

Boatemaa hopes to investigate Diabetic biomarkers and therapeutic targets. Boatemaa is also keen to participate in Public Patient Engagement to promote health education.



Jack Rendall

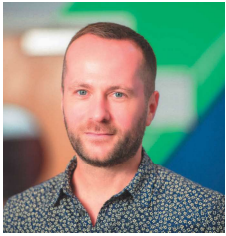
Email: Jack.Rendall@gcu.ac.uk

Research Online: <https://researchonline.gcu.ac.uk/en/persons/jack-rendall>

Jack Rendall is a Research Fellow in the Yunus Centre for Social Business and Health. He has been at GCU since 2010 coming through his Undergraduate, Master's, and PhD. Having also spent time as a Research Associate at Nottingham Trent University, Jack has worked on a variety of different projects, but his research largely focusses on how community organisations impact upon health and wellbeing.

Jack uses a variety of methods in his work, but he has a particularly keen interest in the use of Q Methodology to elicit shared perspectives on different topics. In his doctoral work he used Q Methodology to explore the perspectives of those working in Scottish social enterprises and how they view job quality.

Jack is currently working as part of a UK-wide team funded by the NIHR which aims to evidence how community-led organisations impact upon the health and wellbeing of people in disadvantaged areas. He also runs a podcast about Q methodology and is Chair of Lingo Flamingo, a Glasgow-based social enterprise that focusses on delaying dementia in older adults through language learning.



David Whiteley

Email: David.Whiteley@gcu.ac.uk

Research Online: <https://researchonline.gcu.ac.uk/en/persons/david-whiteley>

Dave qualified as a registered nurse in 2005 from the University of Dundee, and subsequently built his clinical career within the fields of infectious diseases and sexual health. After completing his PhD in 2017, he moved into academia joining Edinburgh Napier University as a lecturer. During this time, he was awarded his first grant from the Chief Scientist Office focused on decentralising hepatitis C treatment into primary care in Scotland. In 2021 he moved west, joining Glasgow Caledonian University as a lecturer, and soon after securing a 0.5 secondment to the Substance Use Research Group as a research fellow. This broadened his research focus into alcohol, securing a couple of small grants focused on alcohol use among sexual and gender minorities. In addition to his research activities, Dave is the lead for evidence-based practice within the undergraduate nursing curriculum, leads the third-year undergraduate research module, and supervises Masters and PhD students.



Kathryn Wilson

Email: Kathryn.Wilson@gcu.ac.uk

Research Online: <https://researchonline.gcu.ac.uk/en/persons/kathryn-wilson>

After obtaining my PhD in cardiovascular biology from the University of Edinburgh I began my post-doctoral career at the Scottish Pulmonary Vascular Unit (SPVU) researching the life-limiting condition pulmonary hypertension, which affects the blood vessels transporting blood to the lungs. There is currently no cure for pulmonary hypertension and much of my research has been focused on the development of new therapeutic targets. After a successful research collaboration with a large pharmaceutical company I secured a highly sought-after British Heart Foundation Basic Science Immediate post-doctoral fellowship. This fellowship has enabled me to investigate the role of inflammatory pathways in the cardiac and vascular remodelling associated with pulmonary arterial hypertension. The SPVU joined the Department of Biological and Biomedical Sciences at GCU in 2019 and after a period of maternity leave, I began my role as a research fellow in 2021. I have collaborators at GCU, the Universities of Glasgow and Strathclyde and Imperial College London and my research interests include vascular fibroblasts, fibrosis and cardiac remodelling and the development of novel cellular models of pulmonary arterial hypertension. Outside the lab, I am a keen participant in public engagement, outreach and STEM activities and have recently become co-chair of the SHLS ECR Network.